

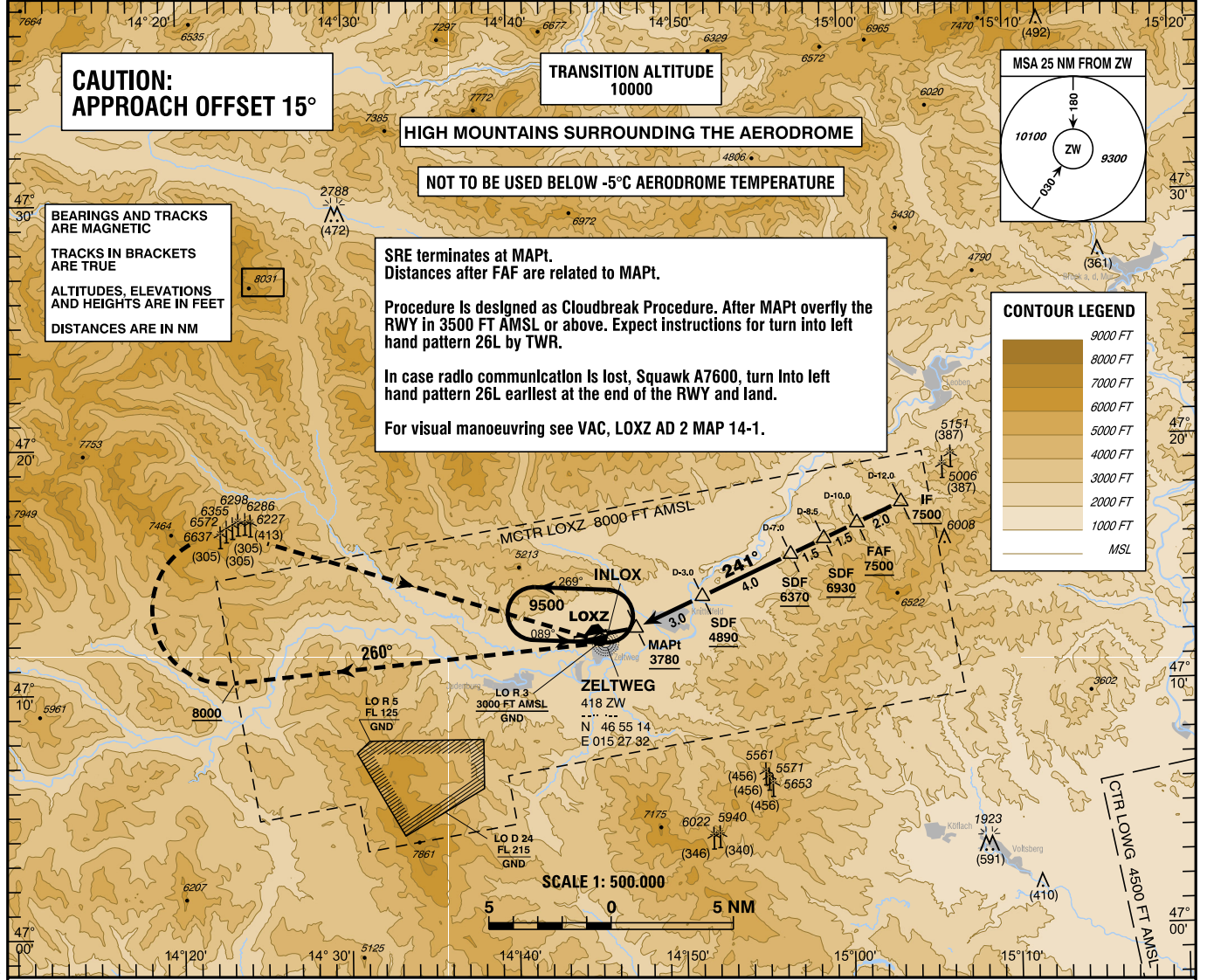
**INSTRUMENT APPROACH CHART - ICAO**

VAR 4° E

AD ELEV 2264 FT  
THR 26 ELEV 2200 FT  
HGT RELATED TO THR ELEV

Radar 129.475Mhz  
PAR 136.425Mhz  
Tower 135.375Mhz  
Atis 132.525Mhz

**ZELTWEG (LOXZ)**  
ÖSTERREICH AUSTRIA  
**SRE RWY 26L**



**CAUTION: APPROACH OFFSET 15°**

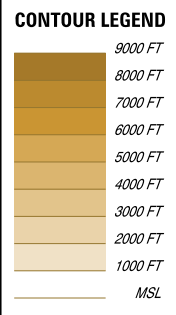
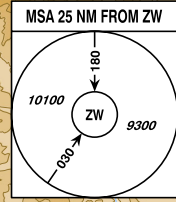
**TRANSITION ALTITUDE 10000**

**HIGH MOUNTAINS SURROUNDING THE AERODROME**

**NOT TO BE USED BELOW -5°C AERODROME TEMPERATURE**

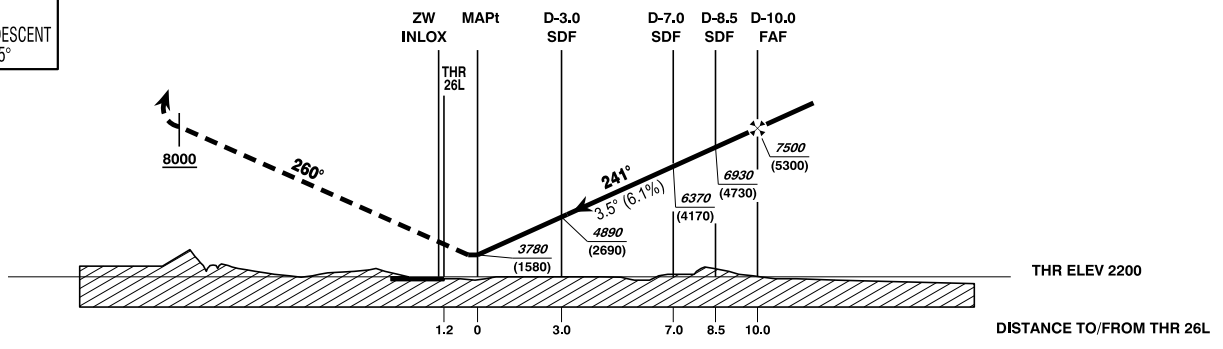
**BEARINGS AND TRACKS ARE MAGNETIC**  
TRACKS IN BRACKETS ARE TRUE  
ALTITUDES, ELEVATIONS AND HEIGHTS ARE IN FEET  
DISTANCES ARE IN NM

**SRE terminates at MAPt.**  
Distances after FAF are related to MAPt.  
**Procedure is designed as Climbout Procedure.** After MAPt overfly the RWY in 3500 FT AMSL or above. Expect instructions for turn into left hand pattern 26L by TWR.  
**In case radio communication is lost, Squawk A7600, turn into left hand pattern 26L earliest at the end of the RWY and land.**  
**For visual manoeuvring see VAC, LOXZ AD 2 MAP 14-1.**



CHANGE: EDITORIAL

**CAUTION: APPROACH DESCENT GRADIENT 3.5°**



**MISSED APPROACH: CLIMB ON QDR/TRACK 260 TO 8000 FT AMSL; RT TO ZW/INLOX AND HOLD;**

OCA (OCH) IN FT	MA CLIMB GRADIENT	A	B	C	D
SRE	2.5%	5070			
	5.0% up to 8000	3780			
CIRCLING	see VAC, LOXZ AD 2 MAP 14-1				

FAF to MAPt - DISTANCE 10.0 NM							
(Timing not authorized for defining the MAPt)							
GS (KT)	80	100	120	140	160	180	
FAF - MAPt	MIN : SEC	7:30	6:00	5:00	4:17	3:45	3:20
Rate of descent (6.1%)	FT / MIN	500	620	740	870	990	1110

DIST In NM to MAPt	10	9	8	7	6	5	4	3	2	1
ALTITUDE (HEIGHT)	7500 (5300)	7110 (4910)	6740 (4540)	6370 (4170)	6000 (3800)	5630 (3430)	5260 (3060)	4890 (2690)	4520 (2320)	4150 (1950)