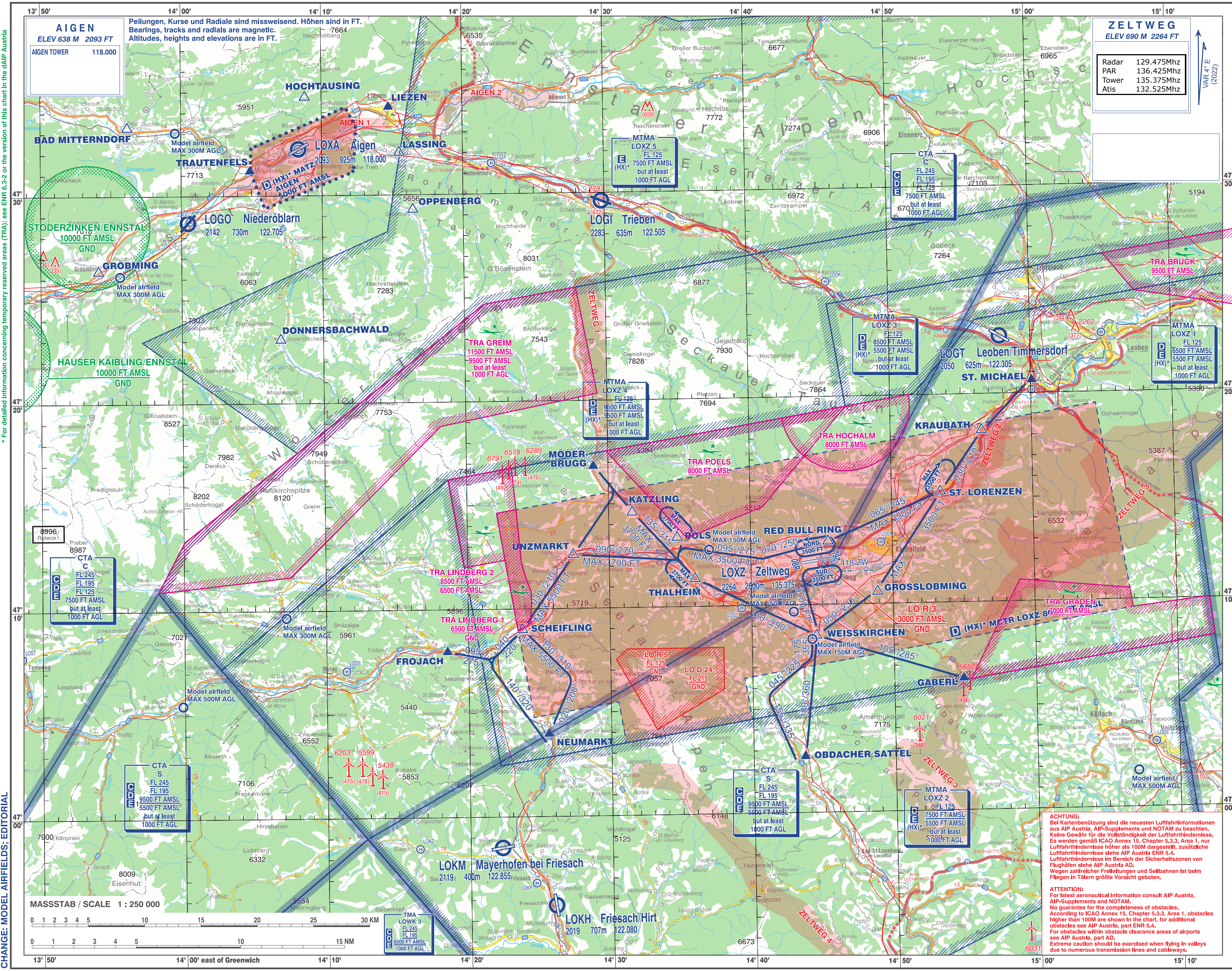


For Flight Simulation and non commercial use only!
Courtesy of Austro Control GmbH

* Detaillierte Informationen zu temporären Luftraumreservierungen (TRA): siehe ENR 6.5-2 oder die Version dieser Karte in der dAIP Austria
* For detailed information concerning temporary reserved areas (TRA): see ENR 6.5-2 or the version of this chart in the dAIP Austria



AIGEN
ELEV 638 M 2093 FT
AIGEN TOWER 118.000

ZELTWEG
ELEV 690 M 2264 FT

Radar	129.475Mhz
PAR	136.425Mhz
Tower	135.375Mhz
Atis	132.525Mhz

VAR 4° E (2022)

ACHTUNG: Bei Kartenbenützung sind die neuesten Luftfahrtinformationen aus AIP Austria, AIP-Supplements und NOTAM zu beachten. Keine Gewähr für die Vollständigkeit der Luftfahrthindernisse. Es werden gemäß ICAO Annex 15, Chapter 5.3.3, Area 1, nur Luftfahrthindernisse höher als 100M dargestellt, zusätzliche Luftfahrthindernisse siehe AIP Austria ENR 5.4. Area 1, obstacles higher than 100M are shown in the chart, for additional obstacles see AIP Austria, part ENR 5.4. For obstacles within obstacle clearance areas of airports see AIP Austria, part AD. Extreme caution should be exercised when flying in valleys due to numerous transmission lines and cableways.

ATTENTION: For latest aeronautical information consult AIP Austria, AIP-Supplements and NOTAM. No guarantee for the completeness of obstacles. According to ICAO Annex 15, Chapter 5.3.3, Area 1, obstacles higher than 100M are shown in the chart, for additional obstacles see AIP Austria, part ENR 5.4. For obstacles within obstacle clearance areas of airports see AIP Austria, part AD. Extreme caution should be exercised when flying in valleys due to numerous transmission lines and cableways.